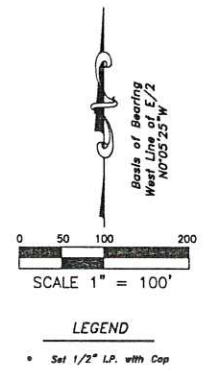
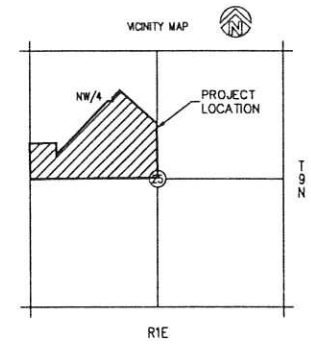


**2018-185
PLAT DRAWN
ROADS ENTERED
ADDRESSES ADDED
MSAG ENTERED
MJD
09/27/2018**

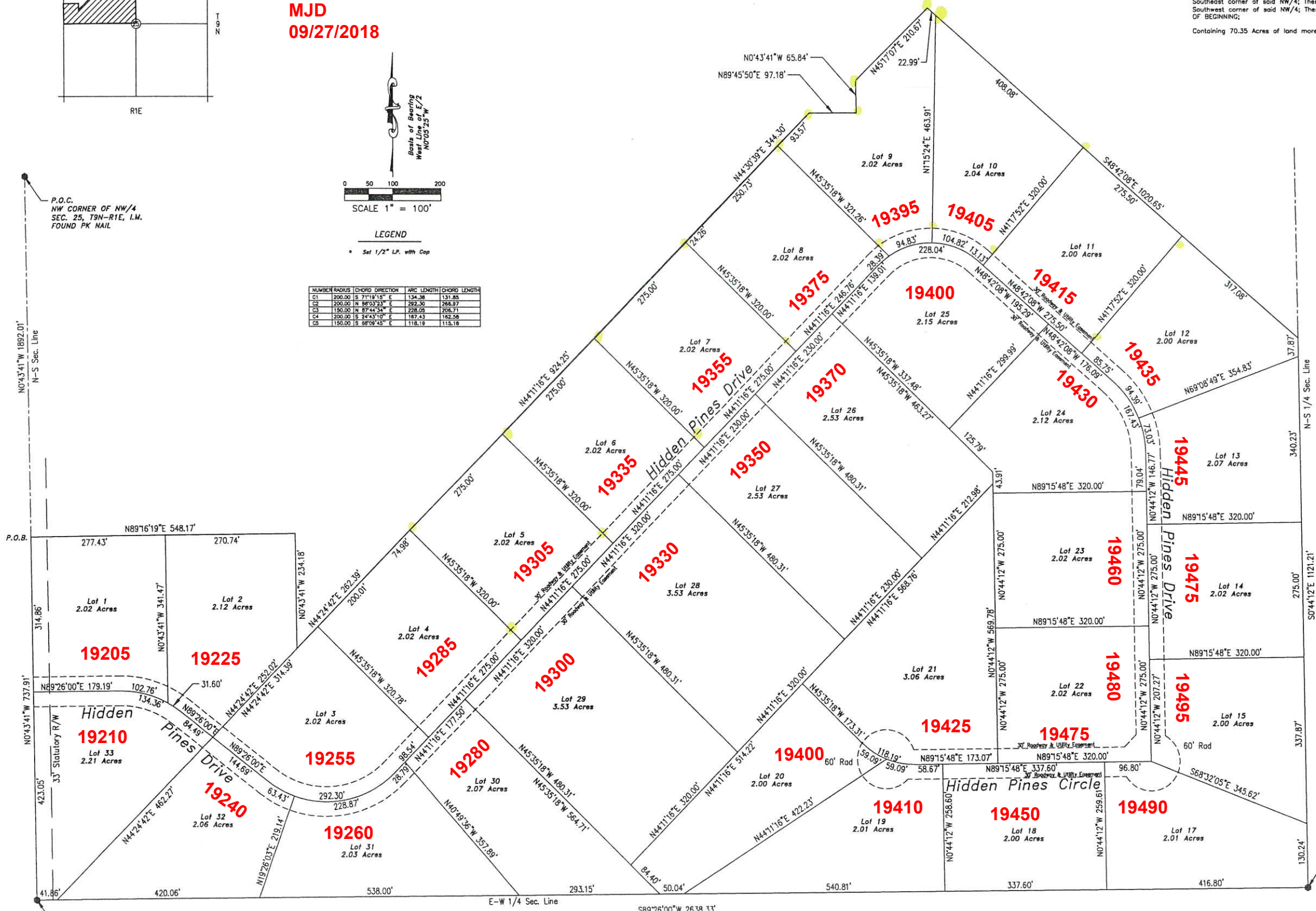
FINAL PLAT of Hidden Pines Estates

A Subdivision of Part of the Northwest Quarter (NW/4), Section Twenty Five (25),
Township Nine (9) North, Range One (1) East of the Indian Meridian
Cleveland County, Oklahoma

PROPERTY DESCRIPTION
A tract of land being part of Section 25 in Township 9 North, Range 1 East of the Indian Base and Meridian, Cleveland County, Oklahoma, described as follows:
Commencing at the Northwest corner of said NW/4 of said Section 25; Thence S0°43'41"E along the West line of said NW/4 of Section 25 a distance of 1892.01 feet to the POINT OF BEGINNING; Thence N89°16'19"E a distance of 548.17 feet; Thence S0°43'41"E a distance of 234.18 feet; Thence N44°24'42"E a distance of 262.39 feet; Thence N44°11'16"E a distance of 924.25 feet; Thence N44°30'39"E a distance of 344.30 feet; Thence N89°45'50"E a distance of 97.18 feet; Thence N0°43'41"W a distance of 65.84 feet; Thence N45°17'07"E a distance of 210.67 feet; Thence S48°42'08"E a distance of 1020.65 feet to a point on the East line of said NW/4; Thence S0°44'12"E along the East line of said NW/4 a distance of 1121.21 feet to the Southeast corner of said NW/4; Thence S89°26'00"W along the South line of said NW/4 a distance of 2638.33 feet to the Southwest corner of said NW/4; Thence N0°43'41"W along the West line of said NW/4 a distance of 737.91 feet to the POINT OF BEGINNING;
Containing 70.35 Acres of land more or less.



NUMBER	RADIUS	CHORD	DIRECTION	ARC LENGTH	CHORD LENGTH
C1	200.00	S 71°19'15" E		134.38	131.85
C2	200.00	N 86°03'23" E		292.30	266.97
C3	150.00	N 87°44'54" E		228.09	206.71
C4	200.00	S 24°43'10" E		191.43	182.58
C5	150.00	S 68°09'45" E		118.18	115.18



SE CORNER OF NW/4
SEC. 25, T9N-R1E, I.M.
Found 3/8 I.P.

SW CORNER OF NW/4
SEC. 25, T9N-R1E, I.M.
FOUND PK NAIL