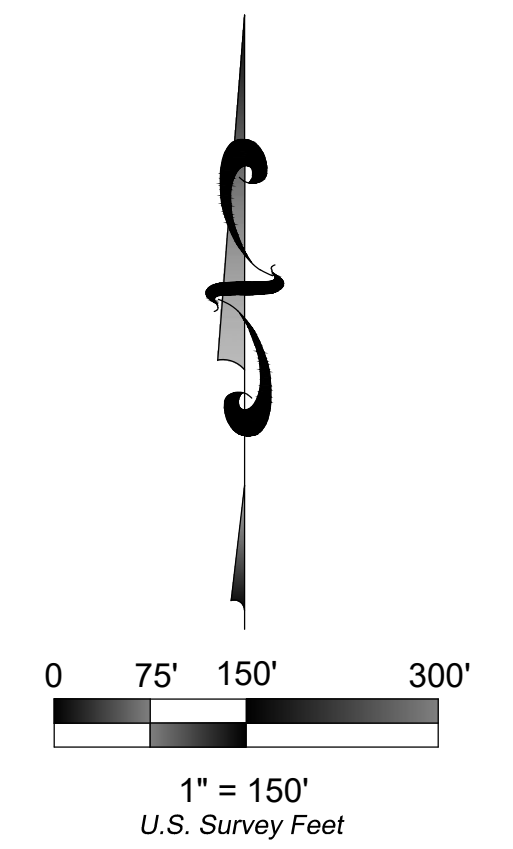
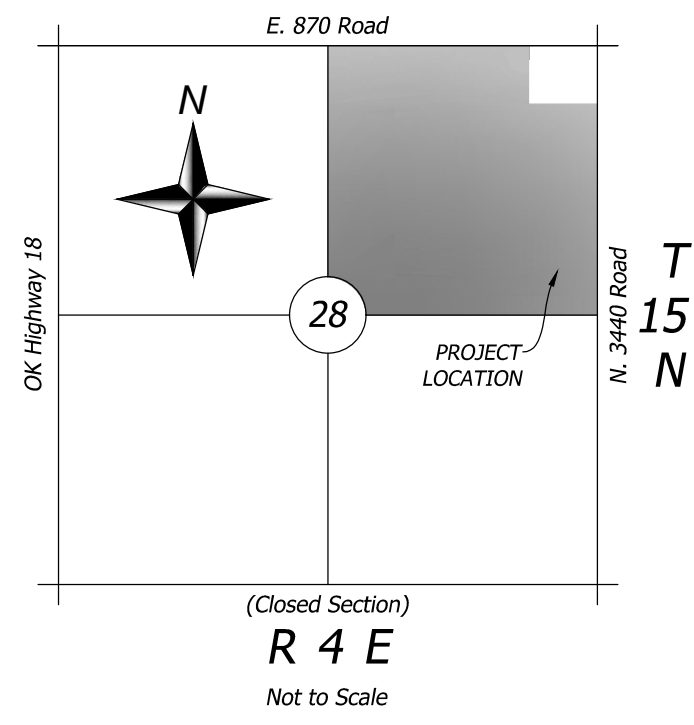
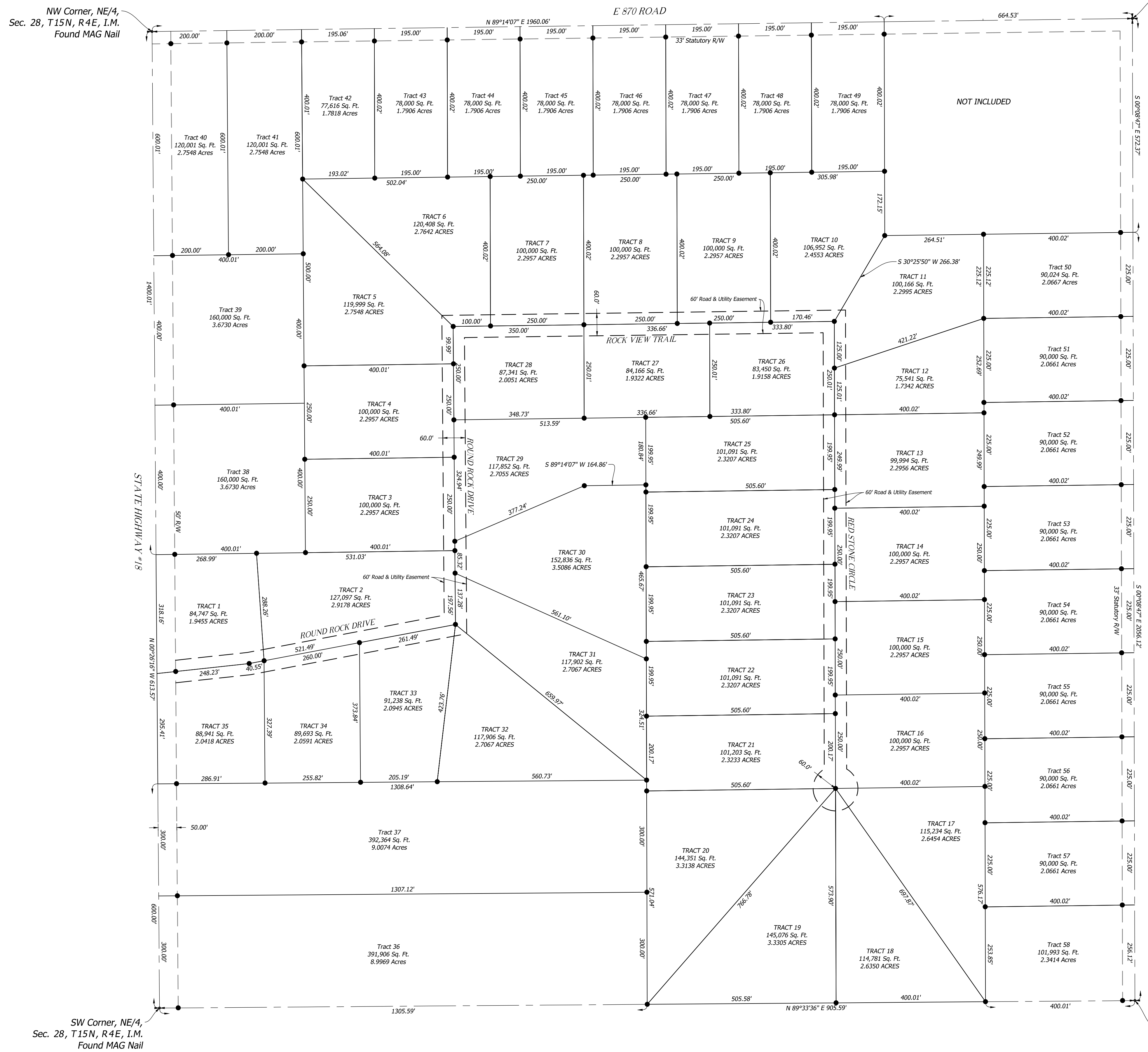


EXHIBIT OF ROUND ROCK ADDITION



NW Corner, NE/4,
Sec. 28, T15N, R4E, I.M.
Found MAG Nail

NE Corner, NE/4,
Sec. 28, T15N, R4E, I.M.
Found 5/8" Iron Pin



SW Corner, NE/4,
Sec. 28, T15N, R4E, I.M.
Found MAG Nail

SE Corner, NE/4,
Sec. 28, T15N, R4E, I.M.
Found 5/8" Iron Pin

THIS DOCUMENT IS NOT FOR RECORDING PURPOSES

- LEGEND**
- ⊕ Section Corner
 - ⊙ Quarter Corner
 - Set 1/2" Iron Rod
 - Set MAG Nail
 - Plat Boundary Line
 - Lot Line (This Plat)
 - Easement (This Plat)
 - Existing Lot Line
 - Existing Easement
 - U/E - Utility Easement
 - R/W - Right of Way
- NOTE: ALL MONUMENTS SET ARE CARVED 3/8" IRON PINS OR MAG NAILS WITH WASHERS BOTH BEING STAMPED "GOLDEN LS 2022"

Prepared By
GOLDEN
LAND SURVEYING
7304 NW 164th St., Suite #5, Edmond, Oklahoma 73013
C.A.# 7263 / Exp. Date = 6/30/2022
Telephone: (405) 802-7883 Email: troy@goldenls.com